

December 2023

NEWSLETTER



Message from the Principal

This half term has been full of the usual array of ups and downs that this time of year brings. It was lovely to see so many people at the Christmas Fayre - both The Federation event and the smaller Stocklake Craft Fayre - and there have been a number of other Christmas events across both schools that make this time of year such a pleasure. The winter months also bring more than their fair share of coughs, colds, and other illnesses, and we continue at both schools to ensure we have what we would like to have in the way of staffing. I would like to offer my continued appreciation to all staff for the sterling work they have done and continue to do with our children, as there are so many examples of wonderful work and progress still being seen.

I wish you all a very happy Christmas break and look forward to seeing the children after the holidays.

Bradley

Enjoy our newsletter offering this time around and please do give us feedback for how you might like to see it develop. Please send all feedback to either office@bookerpark.bucks.sch.uk or office@stocklakepark.bucks.sch.uk



Bradley Taylor
Principal



Booker Park

Message from Head of School

It has been good to see so many families and friends at various events over the past few weeks, including the Christmas Fayre and the Christmas performances. I have enjoyed seeing both the pupils and the staff enjoying themselves and being fully involved. For me, it is always a particular pleasure to see some of our previous students come along to events such as the Christmas Fayre and see how well they are doing. These events remind me of the importance of collaboration between school and families, which we really do value. Thank you for all of your support this term!



Marianne
Murphy
Head of School



Class Updates



Owl Class

In 'Creativity', every learner in Owl class painted their own pebble. They spoke about the colours they were using and some of them could describe what they were painting. Here are some of our learners working really hard. Well done, Owl class!





Class Updates



Raven Class

Briony, the Music Therapist and Helen, our Speech and Language Therapist have introduced Raven Class to a new sensory story about Mr Gumpy going on a journey and finding different instruments. The children responded positively to Briony's guitar, choosing between instruments and the sparkly fabric over the hoop that rattled when the cold water made Mr Gumpy shiver! As well as having lots of fun, the children were able to work on many of their short-term targets during this sensory story e.g., choosing between photographs, exploring with their hands and interacting with others.





Class Updates



Penguin Class

Penguin Class have been busy making Christmas decorations for the Aylesbury Vineyard Christmas tree decorating competition last weekend. The children painted twigs and wood and stuck them onto a lolly stick and used tinsel and bows.

Penguin Class have continued to work hard on their phonics and maths. In English, we have also enjoyed studying 'Mr Gumpy's Outing' by John Burningham. Penguin Class have enjoyed taking part in some interesting science experiments on 'The Senses'. They particularly enjoyed trying to identify different kinds of smells. Everyone's favourite was the sweets and not surprisingly, everyone's least favourite was sour milk. Yuk!

We are looking forward to performing the Christmas play and other fun Christmas activities as we come towards the end of term.





Class Updates



Parrot Class

Parrot class is getting ready for the festive season in our creativity session, and we have made some colourful Christmas trees!



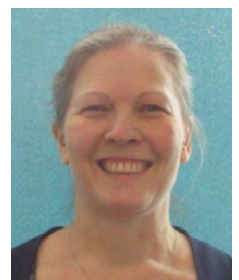


Stocklake Park

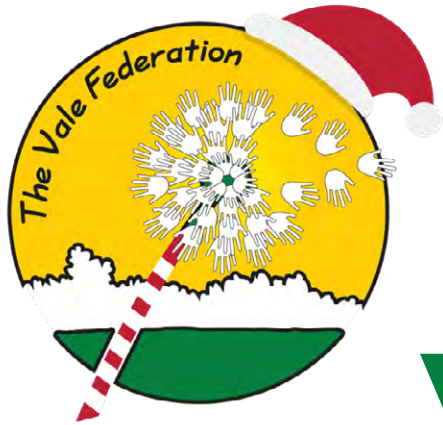


Message from Head of School

I trust that you have enjoyed reading news about our class teams over the course of this term. There has been a big focus in getting Preparation for Adulthood threaded through our curriculum. What this looks like depends on each student and ensure opportunities to gain different experiences such as people coming in to talk about their job, students producing items to sell at the Christmas Fayre and students trying out different roles.



Rhonda
Head of School



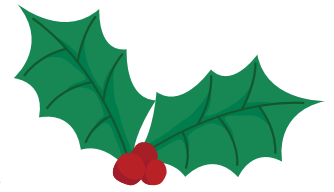
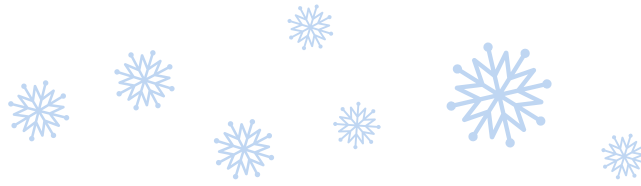
Vale Federation Christmas Fayre

A few weeks ago, Vale Federation celebrated its MASKS Christmas Fayre. A heartfelt thank you goes out to all those who attended, contributed, and helped with making this possible. Below are some photos of the event. We hope you enjoy!









The top 5 winners **from the Christmas Fayre Raffle**

- 1. Nintendo Switch – R Judd**
- 2. £250 One4All Gift Card – N Tariq**
- 3. Micro Scooter – R Robbins**
- 4. £100 Tesco Voucher – L Wells**
- 5. £40 Amazon Voucher – D Jones**





SEN Friendly & Free events



SEN friendly cinema screenings



Escape the cold and busy city sounds. Throughout December a trip to an [Odeon](#), [Vue](#) and [Cineworld](#) screen is now more accessible for children with SEN. [Special monthly screenings](#) have been launched for families with SEN. Lights are kept on during screenings, trailers are cut off and sound effects are toned down for an overall more relaxed atmosphere.





SEN Friendly & Free events

Autism Youth Club and Social Hub - Aylesbury Vale

An autism-friendly youth club in Aylesbury for all genders and ages 10 to 25 years.

A social hub for autistic young people featuring:

- Internet laptops
- Gaming Consoles
- Pool tables and table-tennis
- Cafe and Tuck Shop
- Large Chillout room with Lego corner and large TV
- Safe, quiet and understanding social environment

ACE aims to provide a safe and quiet understanding environment for autistic people of all genders, mainly in the 10 to 17 and 18 to 25 years age ranges, and families, but they are keen to support all ages where we can.

They aim to promote inclusion, social interaction, and positive mental health.

A diagnosis of autism is not required if you feel traits and self-identifying are applicable.

Friends/siblings are welcome, if they are understanding of autistic needs, pay the entry fee(s) and follow ACE rules.

They are volunteers, not professionals. They do need a responsible adult(s) to stay with minors and/or vulnerable adults to satisfy their Liability Insurance. Support and activities are available for those who need to stay under these circumstances. If this is a possible issue, please contact them in confidence.

Any questions, please email:

aylesburyvale.branch@nas.org.uk



Facilities & Estates

Update:

The Autumn 2023 term has been extremely busy for the Facilities and Estates team, with a couple of key headlines:

Booker Park School Flood - this was a challenge towards the end of October, with multiple areas of the school sustaining considerable flood damage. We have been working with our insurers and are pleased that numerous works have been underway to complete the necessary repairs, with further works continuing into January and February. The works include:

- Replacement moveable floor electrical equipment and hydraulics for the specialist hydrotherapy pool floor
- Removal and installation of completely new hydrotherapy pool surrounding walkway floor
- Removal and replacement of the flooring in the main hall
- Removal and replacement of the flooring in the main entrance corridor (full length)
- Removal and replacement of the flooring in the main hall changing rooms and table store area
- Removal of all the above area skirting boards and lower walls, to be replastered, decorated and new skirting boards installed

Additional security doors have also been installed, enhancing security further, along with further areas of internal fencing upgraded from aging wood to ROSPA certified powder coated playground/education metal fencing.

Harding House Facility Termination - following a review by the building owners and their requirements for specific use of the building, the build of the new sixth form building at Stocklake Park School campus and the Harding House facility presenting numerous accessibility challenges for some of our students, the facility is being handed back to Buckinghamshire Council on the 22nd December 2023. There has been considerable works undertaken to clear the building, make the necessary remedial repairs and removal of many items across all areas of the building, to be meeting our contracted obligations.

Stocklake Park School has had the remaining student area carpet floors upgraded to vinyl flooring, improving many of the floor areas through re-levelling all, new flush doorway thresholds and anti-slip floor coverings.

Additional security doors have been installed, enhancing security further, along with additional security perimeter fencing.



Catering Update

Unfortunately, at the end of this term both our Head Chef, Ronald Bailey and Assistant Head Chef, Graham Shaw are leaving us after over 10 years of service to the Vale Federation. They have made an outstanding contribution to both schools, having been responsible for delivering over 610,280 meals during their time at The Federation, a truly outstanding achievement!

Thank you Ronald and Graham and we most certainly wish you all the very best of success in your future endeavours.

Moving forwards, we have completed a full review of all of our options, completing considerable research and investigation into numerous potential avenues, both in terms of recruitment to both posts above, as well as alternative external suppliers.

Our key objectives and desire to ensure we have daily freshly prepared meals, across a multiple of meal options, completed on site by a fully trained and specialist catering team, that are able to meet all the specialist meal types that are required, remained our goal when assessing. The outcome of which, resulted in us selecting three external providers to present their proposals and solutions to meet our objectives. This was a robust process and covered many layers of due diligence, before we selected our chosen catering partner, Connect Catering Services.

From the 2nd January 2024, Connect Catering Services will commence delivering all of our school meals across The Federation, encompassing our existing catering team members and adding to that team their own Head Chef and Assistant Head Chef, as well as a Kitchen Assistant. They will operate from our own commercial kitchen on site at Booker Park School, preparing and serving all school meals daily.

The parent meal ordering process via the Arbor app will continue with no changes to the ordering process and school meals payment process, ensuring no disruption for parents at any time.

We are extremely pleased to have secured Connect Catering Services and welcome them as our catering partners from January 2024.



Parents' workshops



Buckinghamshire Family Learning



DO YOU KNOW ABOUT THE BENEFITS OF FAMILY LEARNING?

"I'm more confident to support my child. I met fantastic mums and my tutor is the best teacher. I loved doing this course."



Maths

100% said that the teaching was good or excellent.

100% enjoyed the course.



Reading



Stories

100% of learners said that the range of activities and resources on the course were excellent.



Writing

"Supportive, enthusiastic and committed. Always going above and beyond for us. I've learnt a lot and it was fun."



Crafts

94% of learners are better able to support their child.



Wellbeing

"Thank you for being a great tutor and mentor on this Early Years journey."

98% of learners thought they made good or excellent progress compared to when they started the course



Parents' workshops



Buckinghamshire Family Learning

**Help your child manage their Wellbeing
with these FREE online workshops**

Mondays 7pm-9pm

for parents and carers with a child in Years 7-11 only*

Years 7, 8 & 9

- 15 January: Help your child build confidence and resilience (FMWB056)
- 22 January: Help your child cope with stress and anxiety (FMWB081)
- 29 January: Help your child to develop positive friendships and manage peer pressure (FMWB087)
- 5 February: Happy, healthy and safe online-tips to help your child (FMWB092)

Years 10 & 11

- 8 January: Help your child cope with stress and anxiety (FMWB105)

* For parents and carers with a child in Years 7 to 11 at one of the following schools: Aylesbury UTC, Beaconsfield School, Bourne End Academy, Buckingham School, Chiltern Hills Academy, Cottlesloe School, Highcrest Academy, Mandeville School, Princes Risborough School, The Grange School and Thomas Freemantle School



SCAN ME



SCAN the QR code, CLICK on the course date link
or PHONE 01296 383582 with the course code (eg. FM.....)
For more information, text Kathryn ☎ 07770 641997



buckinghamshireadultlearning



BucksAdLearning



adultlearningbc.ac.uk



Family Fund

Helping disabled children

Grants available for families with disabled children.



National charity Family Fund has grants available now, to ease winter pressures, for families in England raising a disabled or seriously ill child aged under 18, on a low income.

Grants range from clothing and bedding, white goods and furniture, to sensory and play equipment, digital devices and family breaks and days out.

Families are asked to please **[apply as soon as possible](#)** to gain support while funding is available.

Find out more about Family Fund by visiting the **[charity's grants page](#)**.



Foodbanks and food sharing

Here is a list of Foodbanks in Buckinghamshire. To get a foodbank referral and vouchers speak to your Family Centre, Health Visitor or Social Worker or local Citizens Advice office.

You can also use the [Trussell Trust's website](#) to find its 400-strong network of Foodbanks.

Aylesbury - Store House

Storehouse helps anyone in need by providing food and other items like furniture and clothing to people on low incomes, benefits or who are in temporary hardship.

Areas covered: Aylesbury Vale area.

Referral or voucher needed.

Aylesbury Foodbank

Aylesbury Foodbank provides three days' nutritionally balanced emergency food and support to people with a voucher or referral.

Areas covered: Aylesbury.

Referral or voucher needed.

FoodCycle Aylesbury

FoodCycle Aylesbury welcomes anyone to attend as a guest and enjoy a FREE hot meal. No need to book. Just turn up on the day!

Come and enjoy company and conversation with others from your local area over a delicious meal, prepared with care by FoodCycle volunteers.

Areas covered: Aylesbury and the surrounding areas..

No Referral or voucher needed.



Foodbanks and food sharing

Berryfields Community Store

Berryfields Community Store is open each Thursday morning from 10.30am for anyone in a financial crisis. For a £5 donation, you can choose 25 items of food including fresh meat, vegetables and household items (depending on available stock).

The address is Roman Park, Sir Henry Lee Crescent, HP18 0YT. For further information please contact help@romanparktrust.org.uk.

Areas covered: Aylesbury

No referral or voucher needed

Beaconsfield - Hope Community Drop-in

[Hope Community Drop-in](#) is a drop-in service where local people referred by doctors or social services can receive an emergency food package. The drop-in runs every Friday at the Holtspur Youth Club building from 8:45 am to midday.

Areas covered: Beaconsfield and neighbouring villages.

Referral or voucher needed.

Burnham - Care and Share Food Distribution Project

Burnham Health Promotion Trust (BHPT) [Care and Share food distribution project](#) is a collaborative community initiative which offers pre-filled food bags and a voucher to buy fresh fruit and vegetables.

Voucher needed.

Chiltern - Chiltern Foodbank

[Chiltern Foodbank](#) provides three days' nutritionally balanced emergency food and support to people with a voucher or referral.

Areas covered: The Chiltern District and nearby surrounding areas such as Wendover.

Referral or voucher needed.



Foodbanks and food sharing

Chesham Community Fridge

Chesham Community Fridge distributes free surplus food that is good to eat to anyone who comes to the Fridge. There is no referral or voucher needed. Chesham Community Fridge is open Wednesday and Saturday mornings in the yard behind Broadway Baptist Church, Chesham.

Areas covered: Chesham.

No referral or voucher needed.

High Wycombe - One Can

One Can provide free, nutritious food parcels to those deemed 'in crisis' by their partner organisations.

Areas served: High Wycombe, Buckinghamshire and surrounding areas.

Referral or voucher needed.

Wycombe Community Fridge

Wycombe Community Fridge shares food locally with anyone and everyone regardless of income or means. No referrals are needed.

No referral or voucher needed.

Wycombe Food Hub

Wycombe Food Hub collects crates of unsold food like bread, fruit, vegetables, chilled and frozen foods every week from supermarkets, farms and shops. The products are then made available to people unable to buy food.

No referral or voucher needed but food is available for a small donation.

Milton Keynes - The MK Foodbank

The MK Foodbank provide food parcels that can be picked up from one of their serving sessions located around the city. Clients can receive a food parcel 5 times within a rolling 12-month period.

Areas served: Milton Keynes.

Referral or voucher needed.



Foodbanks and food sharing

Thame Food Bank

[Thame foodbank](#) provides emergency supplies of essential food items to those in the community who are struggling financially.

Areas covered: Thame.

Referral needed.

Wendover - Wendover Free Church Foodbank

[Wendover Free Church Foodbank](#) provides food parcels for the local area.

Areas served: Wendover and neighbouring villages.

Referral or voucher needed.

Wing Foodbank

Areas covered: Wing

No referral needed.

Not in Buckinghamshire but nearby

Rickmansworth Foodbank

[Rickmansworth Foodbank](#) provides food parcels for the local area.

Areas served: Rickmansworth and nearby towns and villages.

Referral or voucher needed.

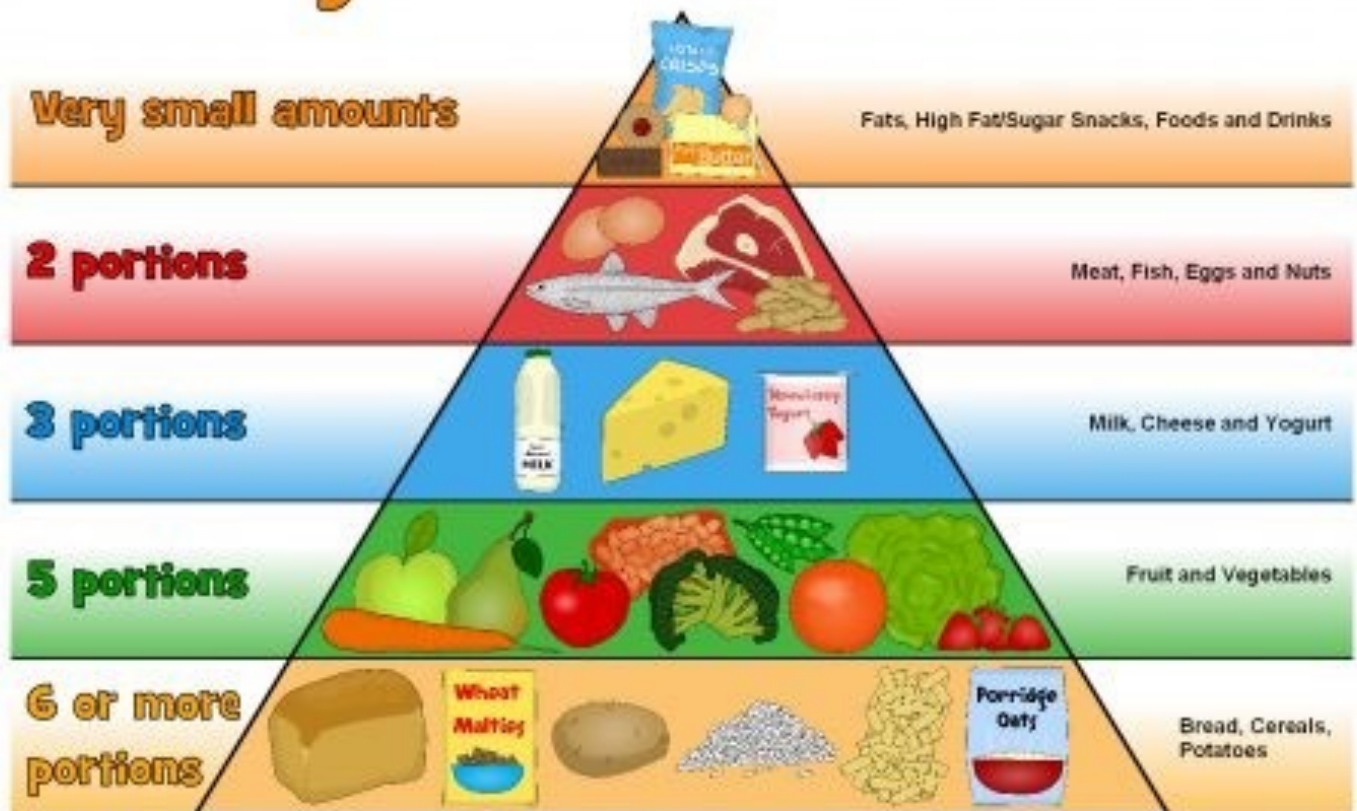


Helpful Information

The Food pyramid gives us an indication of what foods we should be eating and in what quantities on a daily basis. The pyramid should also include water as this is essential to maintain a healthy body

Food Pyramid

© Copyright 2014, www.sparklebox.co.uk





Helpful Information

December Half Term Activities in Buckinghamshire 2023

Hughenden Manor will once again have [decorations in the house and gardens](#) (have a look at some from previous years). Free with admission. The house will be decorated from the 20th November until the 1st January with a 12 days of Christmas theme – which is actually the same theme as last year. Jazz singers every Saturday, storytelling on the 2nd, 3rd, 21st, & 22nd (£4) and free Christmas crafts on the 10th & 17th. You can also do a twilight Christmas tour from the 27th November – 1st December (£16). For all the details [visit their website](#)

Christmas Activities near Aylesbury

[Father Christmas is back at Hogshaw Farm](#). Weekends from 25th November and then daily from 16th – 24th December, plus there are SEN sessions every Saturday. It's such a popular family Christmas event in Buckinghamshire, and it often sells out. Of all the local farm park/ garden centre experiences Hogshaw offers really good value for money. If you're interested, then make sure you book early. It's £13.45 per adult and £24.95 per child.

Be spirited away to a magical wonderland this Christmas at **Waddesdon Manor**

Wednesday 22nd November to Monday 1st January

The well-known Christmas Fair at **Waddesdon Manor** is back again for another year

Wednesday 22nd November to Sunday 17th December



Helpful Information

Aylesbury's big panto at the **Waterside Theatre this year is Snow White and the Seven Dwarfs**** starring Andy Collins, James Bye and Leon Craig. It's running from the 1st Dec – 3rd Jan. If you're looking for something more intimate then the Norman Bragg Studio is showing **Santa's New Sleigh**** (which includes a gift from Santa for every child in the audience) from the 18th – 24th December.

The Most Magical Panto of Them All!

HE'S BACK!
BBC THREE COUNTIES
BREAKFAST SHOW PRESENTER
ANDY COLLINS

MARTIN DODD FOR UK PRODUCTIONS PROUDLY PRESENTS
SOAP STAR and
STRICTLY COME DANCING'S
JAMES BYE

PANTO FAVOURITE
LEON CRAIG

Snow White
& THE SEVEN DWARFS

FRI 1 DEC '23 – WED 3 JAN '24
atgtickets.com/aylesbury

WATERSIDE THEATRE

in partnership with
Bucks radio

Discover Bucks Museum haven't announced all of their Christmas events yet. Their "I Grew Up 80s" exhibition is running from now until March and is included with admission. The Roald Dahl Children's Gallery is open on Saturday's and Monday – Saturday during school holidays.



Helpful Information

The other choice for Panto in Aylesbury is at the Queens Park Centre. This year it's **Peter Pan – Christmas in Neverland** and will be running from the 8th – 30th December. [Tickets £9-£14.](#)

Penns Flowers usually open their [Christmas Grotto](#) the last weekend in November. It's free to visit, but they are raising money for The Rennie Grove Hospice so all donations are welcome.

Christmas events in and around Wendover

The [Santa's Grotto](#) at **Dobbies** in Wendover is open from the 23rd November. The Grotto is £11.99 per child.

Chiltern View Ice Rink will be open from 17th November 2023 until Mid-January. [Tickets](#) are £8 for kids and £11.50 for adults. Skate hire is included. Skate aids are £3.50. There's also the chance to meet Santa.

Christmas events in Milton Keynes

There's a [Santa's Grotto at Milton Keynes Museum](#) in Buckinghamshire Fridays to Sundays from 1st December to the 17th December. £12 per child, adults go free. Admission to the museum is separate and is required for admission to where the Grotto is. There's a Victorian Christmas Wednesdays, Saturdays and Sundays until the 18th December.

Thrift Farm is running [festive sessions](#) every weekend in December. You'll meet Santa, there's gingerbread decorating, animal petting sessions, farmyard trail and a gift. Entry to the farm is included. Tickets are £16.50 per adult and £24.50 per child.



Helpful Information

At Milton Keynes Theatre** Brian Conley will be putting on Cinderella from the 9th December to 14th January



Check out the **Santa's Grotto Experience** at Woburn Sands Emporium this Christmas (SEN Friendly). Selected dates from 2nd to Friday 22nd December

The Vintage Christmas Grotto at Bletchley Park will back this year on selected dates. Sunday 3rd to Friday 22nd December

Land of Lights at Gulliver's Theme Park is a magical lantern festival back for 2023 with a brand new trail. Saturday 21st October to Sunday 25th February



Helpful Information

Christmas Events in and around Amersham

Santa and his elves are coming to train a new generation of elf helpers at **Santa's Winter Wonderland**. Selected dates from Sunday 10th to Wednesday 20th December

Christmas Events in and around Wycombe

Take a magical train ride from Chinnor and Princes Risborough Railway with **Santa Steam Specials**. Saturday 25th November to Saturday 23rd December

Visit **Enchanted Wonderland in High Wycombe** and you will see we've lovingly recreated Santa's famous arctic home. Saturday 2nd to Sunday 24th December

Here are some links you might find useful for you and your family over the Christmas break:

[25 Christmas Crafts and Activities for Children with Special Needs - Specially Gifted](#)

[10 Tips for Enjoyable Christmas with a Child with SEN | SENSational Tutors](#)

[Surviving the festive season: parents' tips for SEN kids](#)



Discount Dining

Kids eat for FREE at any Morrisons café

Kids aged under 16 eat for free at any Morrisons café when an adult spends £4.99 or more on a meal. The kid's meal includes piece of fruit and Tropicana Kids Orange or Apple drink or bottle of water.

my.morrisons.com/kids-eat-free

Kids eat for £1 at Bella Italia

Kids eat for £1 with every adult main between 4pm and 6pm, Mondays to Thursdays at Bella Italia. Kids can enjoy three delicious courses and a Cawston Pressed Fruit Water for just £1. These fab, bargain meals are suitable for 2-11 year olds.

bellaitalia.co.uk/kids

Kids eat free at Pausa Cafés inside Dunelm stores

You can get one free main meal, plus two snacks and a drink for every £4 an adult spends in the in-store café, Monday to Friday after 3pm.

dunelm.com/pausa-coffee-shops

Kids eat for £1 every Monday at Hungry Horse pubs

Every Monday at Hungry Horse, there are selected kids' meals for just £1 and larger meals for only £1.50. You'll also get a free activity sheet to keep the little ones entertained while you eat.

hungryhorse.co.uk/kids-eat-free

Kids eat for £1 at Sizzling Pub & Grill restaurants

For every adult 'sizzling meal', you'll also get a kid's main meal for £1. This offer is available Monday to Friday, between 3pm and 7pm.

sizzlingpubs.co.uk/offers

Kids eat a free breakfast at Travelodge

The Travelodge 'unlimited breakfast' costs £8.99; and up to 2 kids aged 15 or under eat FREE for every full paying adult.

travelodge.co.uk/breakfast



Discount Dining

Kids eat for £1 in Asda's family-friendly cafés

Firstly, you can receive a free Ella's Kitchen baby food pouch for babies under 18 months with any purchase in Asda's cafés. And kids (up to age 16) across England and Wales can eat for just £1 at any time of day in Asda Cafés, 7 days a week, with no minimum adult spend required. Choose from penne pasta with meatballs or a vegan hidden veg pasta meal either with chips or a salad or peas. You can also get a free piece of fruit (apple, pear or banana) when purchasing the hot kids £1 meal deal. Asda Cafés also offer a £1 cold pick and mix selection that includes a sandwich, drink and piece of fruit.

asda.com/cafe

Kids get a free breakfast at Premier Inn

Did you know? You don't have to be a guest to enjoy a Premier Inn breakfast! Two under-16s can eat breakfast for free when one adult orders a full Premier Inn Breakfast or a Meal Deal. It'll set you up for a day full of adventures.

premierinn.com/breakfast

Kids eat for £1 in Sainsbury's cafes

Enjoy one children's hot main meal or lunch bag for £1 with the purchase of an adult hot main meal from £5.20 in the Sainsbury's café. Kids' meals in the Sainsbury's cafe come with a drink (blackcurrant water, apple juice, Happy Monkey chocolate milkshake or milk) and a piece of fruit.

sainsburys.co.uk

Kids eat free at YO Sushi!

Kids under 10 eat free at Yo Sushi! restaurants from Monday to Friday. As you enjoy your sushi and Japanese hot favourites (one child eats free for every £10 spent on food by the accompanying adult), your little ones can tuck into the Mini Ninja children's menu. Kids can choose from tasty mains like Japanese fried chicken, katsu curry or veggie yakisoba noodles, plus a side and a drink.

yosushi.com/kids-eat-free



Discount Dining

Kids eat free at Heathrow airport

During the Christmas Half term (19th Dec - 8th Jan), make the most of Heathrow's Kids Eat Free offer. When an adult chooses an item from the main menu, your kids can eat for free. Participating restaurants include Leon; YO!; Big Smoke; Giraffe; Pilots; and Vagabond.

[heathrow.com/kids-eat-free](https://www.heathrow.com/kids-eat-free)

Enjoy 2 kids breakfasts for free at any Beefeater, Brewers Fayre or Table Table restaurants

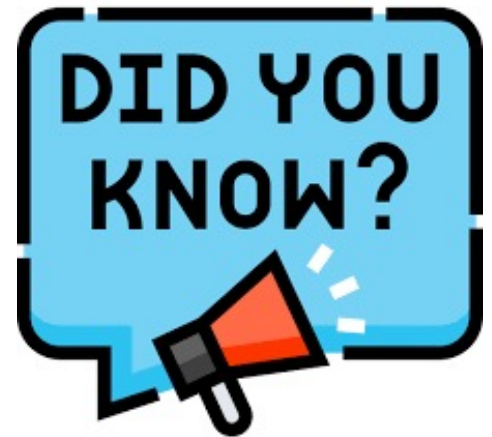
Kids who love pancakes, continental breakfasts or even full English breakfasts are in luck! Two kids under 16 can eat for free with every adult all-you-can-eat breakfast (£9.99) purchased at Beefeater, Table Table and Brewers Fayre restaurants across the UK

[brewersfayre.co.uk/school-holidays](https://www.brewersfayre.co.uk/school-holidays)

Special offers at TGI Fridays for kids

New and existing Stripes Rewards Members can get a FREE children's meal when ordering an adult's main meal. Kids can order from the Little League or Major League menus, and includes sides and fizzy fruit coolers. To become a Stripes Rewards Member, you'll need to download the app and sign up. New members can also claim a FREE dessert on their first visit and earn rewards for each £1 you spend to redeem on food and drink.

[tgifridays.co.uk/kids-eat-free](https://www.tgifridays.co.uk/kids-eat-free)



We offer exclusive hire of our **soft play centre**

Soft Play - 3 hour hire time.
Mon- Fri £100 plus VAT - School holidays only.
Sat - Sun £112.50 plus VAT.
Additional hours on request.

Capacity: up to 20, Maximum number of children on the equipment at one time is 5.
No children over 8 years old. Includes: Exclusive Use/Toilets/Tables & Chairs.

For further information please contact
facilitiesbookings@thevalefederation.com

