



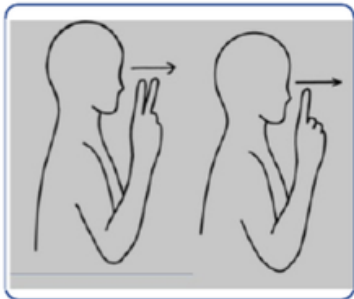
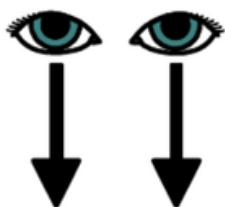
PARENT BULLETIN | 28TH MARCH, 2025

SCHOOL NEWS

SIGN OF THE WEEK

Core Word

look/see



SCHOOL CALENDAR



Wednesday 2nd April
World Autism Awareness Day

Friday 4th April - Last day of term

End of Term: Easter Holidays - 7th to 22nd April

School closes Friday 4th April at 3.00pm and re-opens on **Wednesday 23rd April at 8.50am**
(Tuesday 22nd April is an INSET Day)

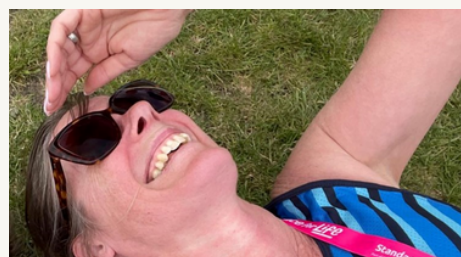
MESSAGE FROM HEAD OF SCHOOL

Unfortunately the swimming pool continues to be out of use due to issues with the floor and the hydraulics. Parts are on order but it may take some time. We will keep you updated. Our school nurse, Jo, is leaving us at the end of next week. The position has been advertised by the NHS and hopefully will be appointed to soon.

Have a good weekend.

Marianne Murphy

RUNNING TO RAISE MONEY - DRIVE DECK



Denyse is running a very long way to raise money for a drive deck! Denyse (from Stocklake Park School) will be "running" (walking/crawling) the Brighton Marathon on the 6th of April to support MASKS with raising money for a drive deck. Many of our children are wheelchair users and are reliant on their carers to help them access their environment. A Drive Deck enables wheelchair users to gain vital independence skills in mobilising and accessing their environment.

The Drive Deck is designed to enable access to powered mobility through the comfort of their own supportive seating system. It can be set up to meet each individual child's needs and access abilities, making it a powerful motivational tool to support the development of independence skills, sensory processing, social skills and community involvement. Due to the NHS's limited funds, they do not provide powered mobility unless there is evidence to prove safe and capable powered mobility skills. The Drive Deck provides us with vital evidence to support the provision of powered mobility, enabling our children to have life changing opportunities for a more independent future. The Drive Deck recently appeared on the BBC documentary "**A Special School**" - <https://www.smilesmart-tech.com/drivedeck-featured-on-bbcs-a-special-school>.

Any donation will be greatly appreciated no matter how small. You can donate here: https://www.justgiving.com/page/denyse-craig-1?utm_medium=FR&utm_source=CL
Please share the link to your social media pages and any companies that may be able to help with a donation.



Have a great weekend.

Bradley Taylor, Principal

Booker Park School, Stoke Leys Close, Aylesbury, Buckinghamshire, HP21 9ET